

PART OF SECTION 29, T.7N., R.1W., S.L.B.&M
LARSON PARK SUBDIVISION

133

TAXING UNIT - 10

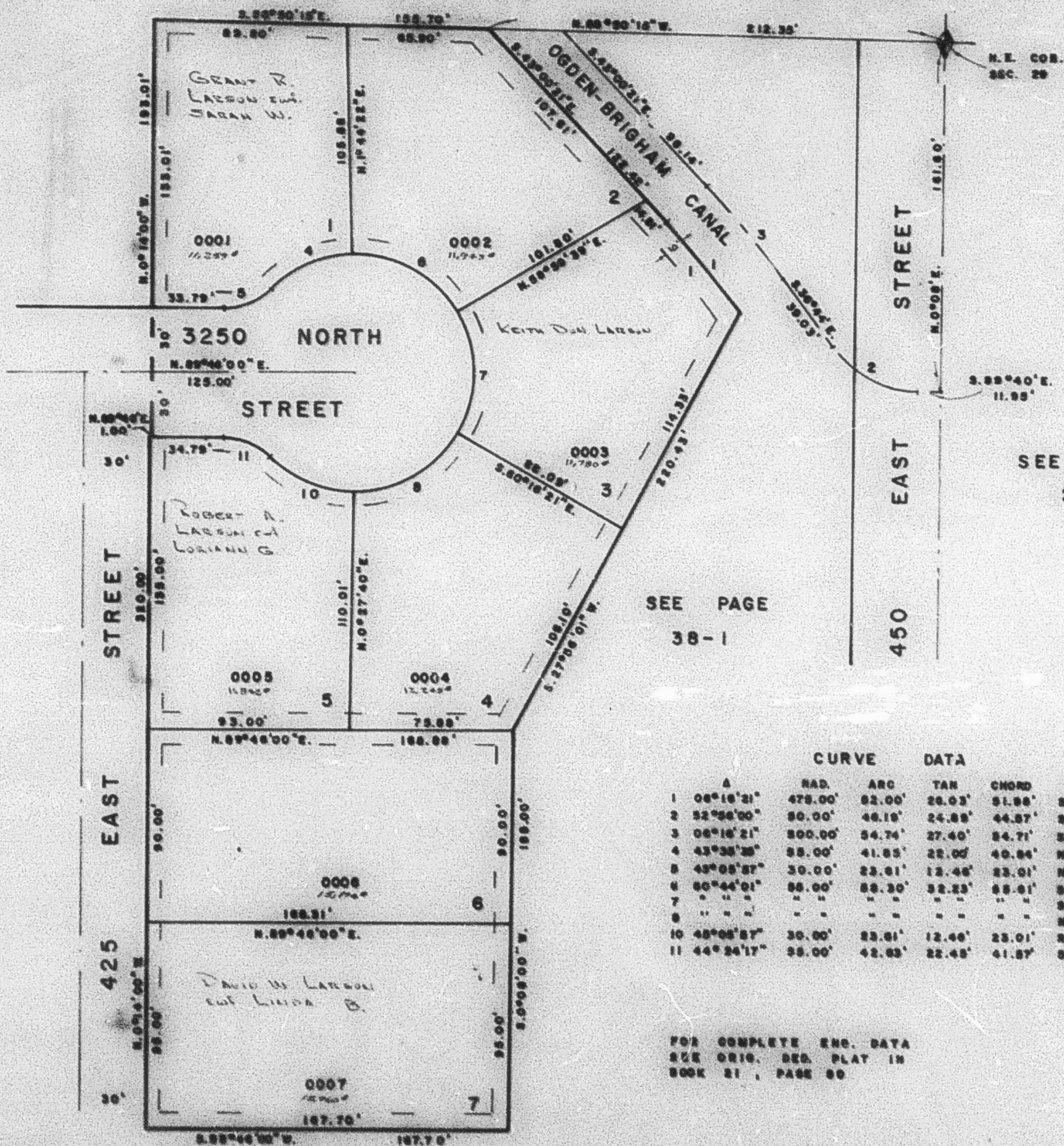
PHASE I
 IN NORTH OGDEN CITY

PREFIX - 17-133

SCALE 1" = 40'

SEE BOOK 16, PAGE 37-2

EXCEPT WHERE OTHERWISE SHOWN
 ALL LOTS OWNED BY
 RAUPH A. LARSON
 AND DONOR B



SEE PAGE 41

SEE PAGE
 38-1

SEE PAGE
 23

CURVE DATA

	A	RAD.	ARC	TAN	CHORD	CHORD BEG.
1	06° 16' 21"	475.00'	82.00'	26.03'	51.98'	S. 39° 52' 11" E.
2	32° 58' 00"	80.00'	46.19'	24.88'	44.87'	S. 63° 12' 00" E.
3	06° 16' 21"	800.00'	54.74'	27.40'	54.71'	S. 39° 52' 10" E.
4	43° 38' 36"	88.00'	41.65'	22.00'	40.84'	N. 89° 18' 36" E.
5	43° 08' 57"	30.00'	23.81'	12.46'	23.01'	N. 07° 13' 01" E.
6	80° 44' 01"	88.00'	88.30'	32.23'	88.81'	S. 61° 22' 28" E.
7	" "	" "	" "	" "	" "	S. 0° 38' 21" E.
8	" "	" "	" "	" "	" "	N. 89° 05' 00" E.
10	43° 08' 57"	30.00'	23.81'	12.46'	23.01'	S. 67° 51' 01" E.
11	44° 24' 17"	88.00'	42.83'	22.45'	41.87'	S. 67° 50' 11" E.

FOR COMPLETE ENG. DATA
 SEE ORIG. DES. PLAT IN
 BOOK 21, PAGE 80

SEE PAGE 38-1